

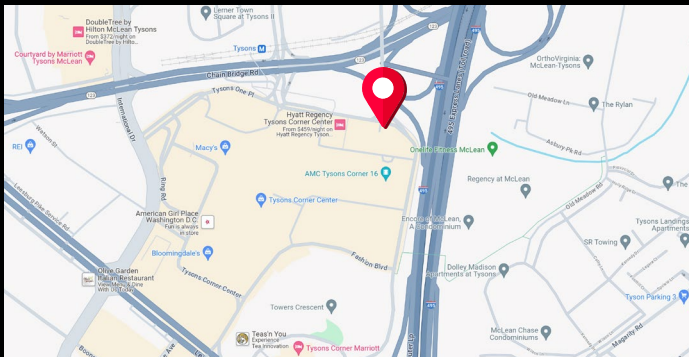
DIGITAL WALL TYSONS 50

GEOPATH ID: TBD

 **Tyson's One Plaza**
McLean, VA 22102

This state-of-the-art digital display broadcasts to the DC Beltway at the upscale shopping center of Tysons Corner. It offers a unique opportunity to reach affluent commuters and shoppers in one of the most exclusive areas in the Washington DC DMA. Tysons Corner Center offers an unbeatable mix of more than 300 brands, 40 dining destinations, a Hyatt Regency, and a 16-screen stadium seating and IMAX 3D AMC Theatres. Tysons' who's who of retail includes Apple, Bloomingdale's, Brooks Brothers, Dyson, Gucci, Lacoste, Louis Vuitton, Macy's, Microsoft, Nordstrom, Peloton, Shinola, Warby Parker, and more!

Size: 34'8"H x 42'11"W	Weekly IMPs: TBD	Facing: North
Latitude: 38.91891	Longitude: -77.218751	Read: Right-hand

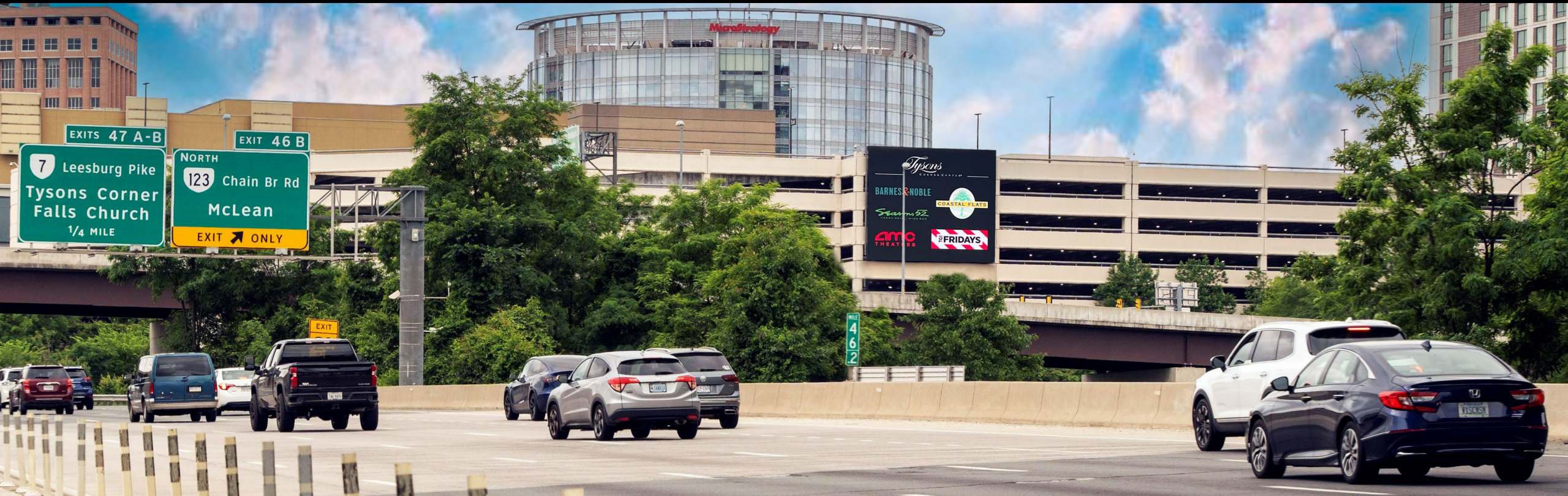


DIGITAL
WALL

TYSONS 50



Location: Tysons One Plaza | Area: McLean, VA | Substrate: Digital



BROADCAST YOUR PRODUCT DIRECTLY AT THE BELTWAY



3286 M Street, NW 3rd Floor, Washington, DC 20007



DC Office: 202.337.1839



chris@capitoloutdoor.com



CapitolOutdoor.com

DIGITAL
WALL

TYSONS 50



Location: Tysons One Plaza | Area: McLean, VA | Substrate: Digital

Check out our reel below. *(Click the image below for reel)*



LAUNCHES
OUTDOOR DIGITAL
SPECTACULAR



3286 M Street, NW 3rd Floor, Washington, DC 20007



DC Office: 202.337.1839



chris@capitoloutdoor.com

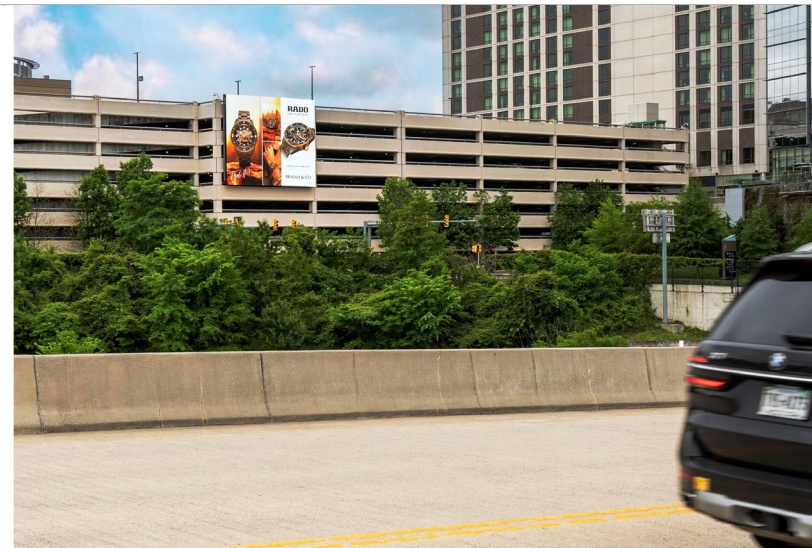
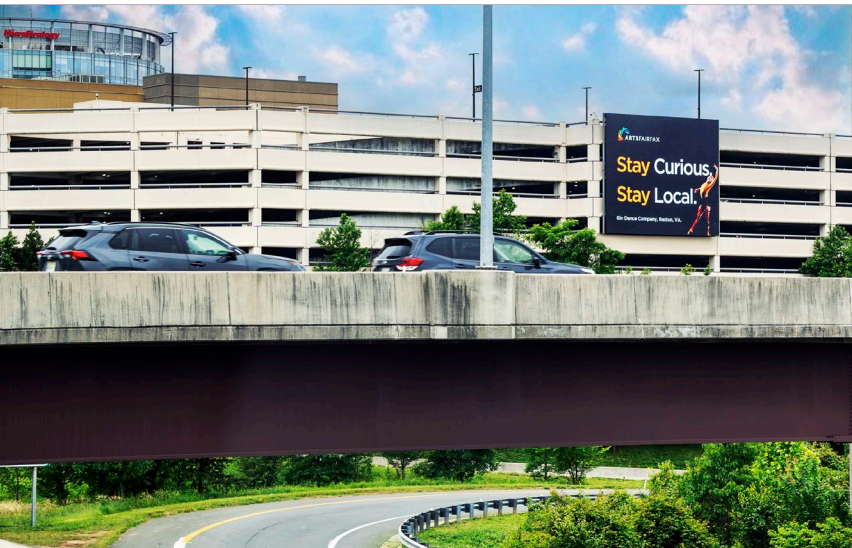


CapitolOutdoor.com

DIGITAL WALL

TYSONS 50

Location: Tysons One Plaza | Area: McLean, VA | Substrate: Digital

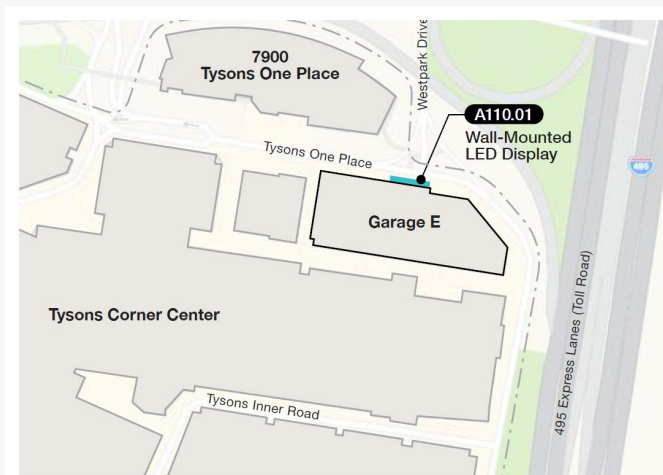
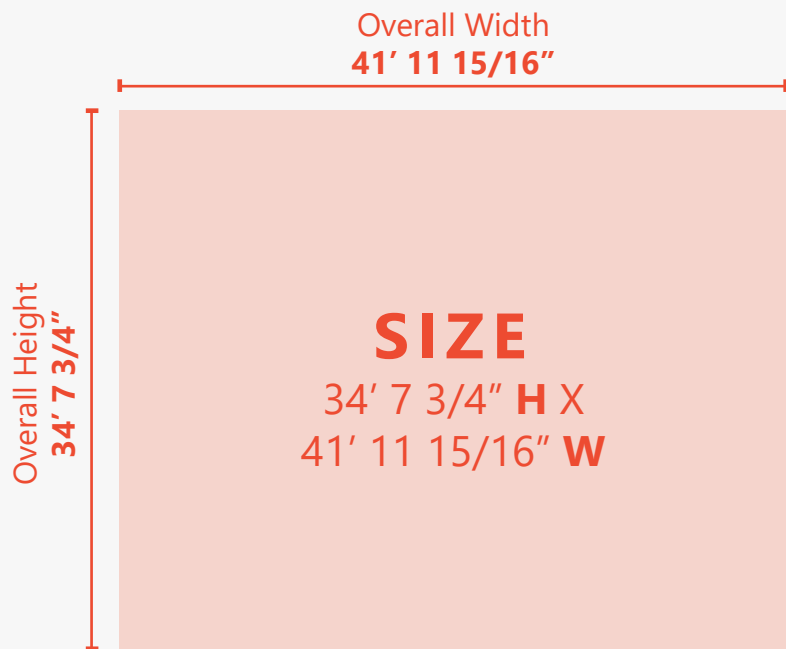


DIGITAL WALL

TYSONS 50



Location: Tysons One Plaza | Area: McLean, VA | Substrate: Digital



Asset Specifications

PHYSICAL DIMENSIONS

34 feet 7 3/4 inches tall by 41 feet 11 15/16 inches wide.
Digital Wall.

PIXEL RESOLUTION: 1056 px tall x 1280 px wide

PIXEL PITCH: 10mm

AUDIO ENABLED: No

➤ MAX OF 3 CREATIVES PER SPOT PURCHASED

TERM 
4
WEEKS

SHIPPING

TBD



3286 M Street, NW 3rd Floor, Washington, DC 20007



DC Office: 202.337.1839



chris@capitoloutdoor.com



CapitolOutdoor.com

Location: Tysons One Plaza | **Area:** McLean, VA | **Substrate:** Digital

General/File Specs

DIGITAL DISPLAYS

Unless otherwise noted here, all files should be developed according to the following specifications:

DISPLAY TECHNOLOGY

Color: RGB

Audio: MPEG-4 ACC Stereo 256 Kbps Normalized to -10db

STATIC FILES

Static File Format:

JPEG or PNG

Quality:

Best Quality

Resolution:

72 dpi

Best Practices – LED Content

Making Content for Large Format LED

When creating content for large format LED displays, it is important the designer considers physical scale of the screen.

Contrast, fine detail, color, and footage speed will not appear exactly the same on a large LED display as it does on the LCD monitor used to create it.

File Naming

Please use this content nomenclature to ensure correct scheduling of the proper content.

Campaign

Name that describes the creative campaign

032219_Campaign_Display Name

Date

Date content is set to begin playing (MMDDYY format)

Display Name
Ex. "Garage E"



01 Strong Content

Combinations of colors that have strong tonal contrast are generally most effective. For example, black on yellow reads better on an LED than pink on red.



02 Copy Size

If using copy, consider the scale, height, and distance of the display in physical space to ensure a legible type size. In most cases a sans serif typeface is recommended to avoid visual "noise", especially on displays with a higher pixel pitch.



03 Brightness

Content with large areas of full white is overwhelming on large displays. Reducing brightness by 5-10% on pure white layers when designing is often desirable.