


DIGITAL WALL BAL-515

GEOPATH ID: TBD

 100 W Pratt Street
Baltimore, MD 21201

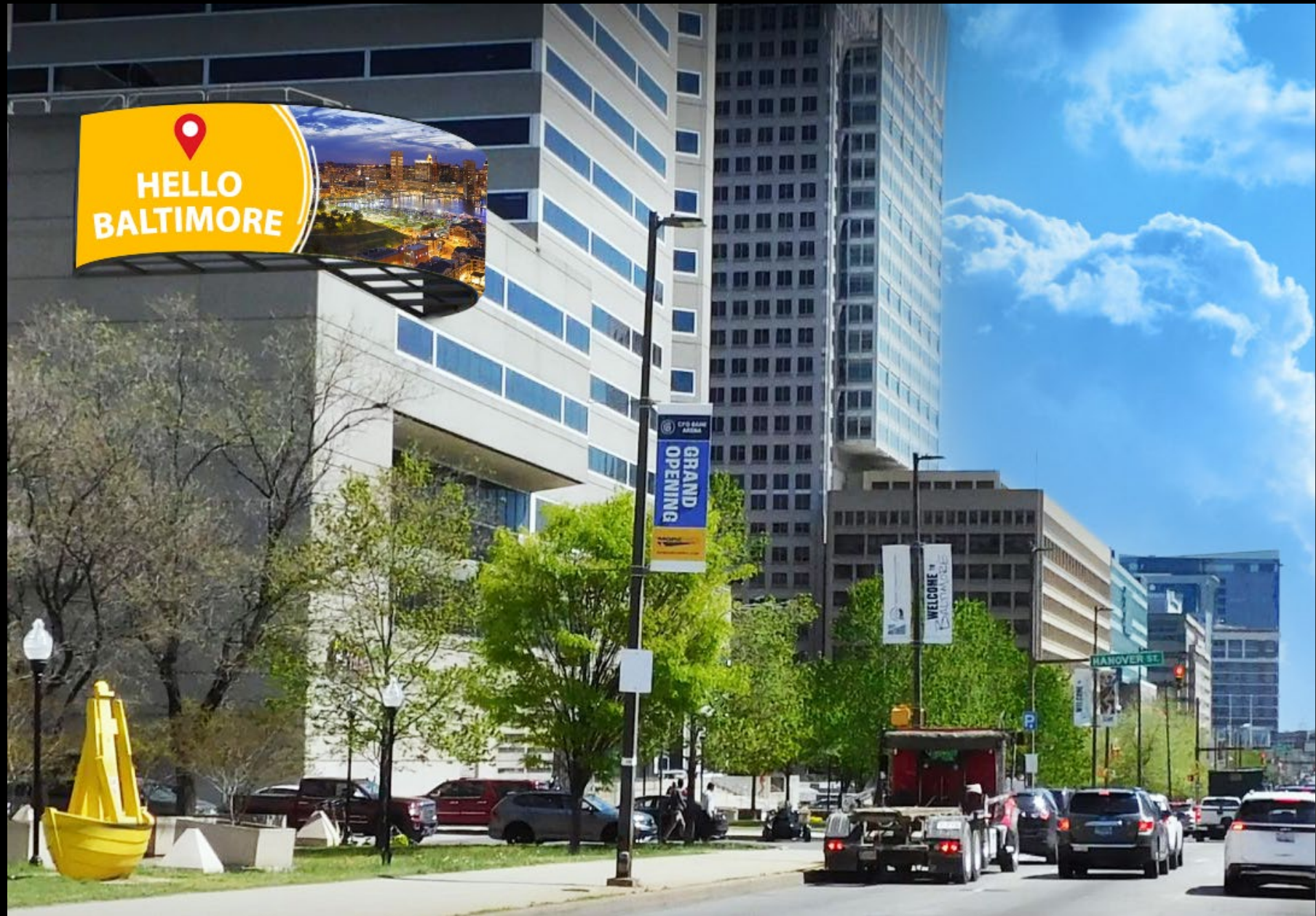
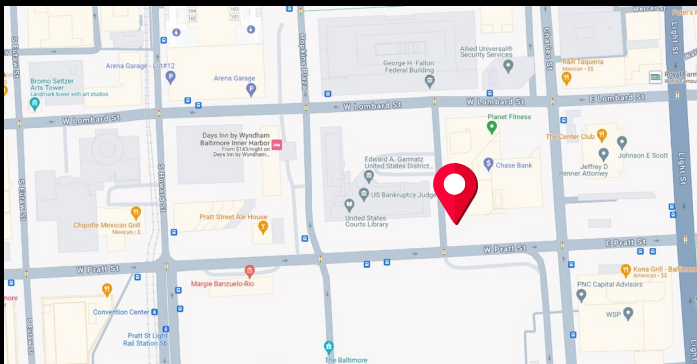
This iconic, unique to the market curved unit is located on Pratt St, the main artery in downtown Baltimore that carries traffic to the Inner Harbor off of 95 and Orioles Park at Camden Yards at I-83. It also directly faces the Baltimore Convention Center and it's flagship hotel. There are currently no other billboards on Pratt St making this a unicorn digital unit in the market.

Size:
20'8 3/4"H x 40'9 5/8"W

Facing:
Southwest

Latitude: 39.28669
Longitude: -76.616042

Read:
Left-hand



DIGITAL
WALL

BAL-515



Location: 100 W Pratt Street | Area: Baltimore | Substrate: Digital

Art/Production Guidelines

SIZE & PRODUCTION

20 feet 8 3/4 inches tall by 40 feet 9 5/8 inches wide.
Illuminated Digital Wall.

- :08 Spots / :64 Loop
- Full Motion Capable

PIXEL SIZE: TBD

RESOLUTION: 72 DPI

RECOMMENDED FORMAT: JPEG, PNG, BMP, GIF

COLOR MODE: RGB

COLOR DEPTH: 24 Bit RGB

➤ **MAX OF 3 CREATIVES PER SPOT PURCHASED**

TERM



SHIPPING

John@capitoloutdoor.com

